

# Erectile Dysfunction

(Impotence)



Presented

by

**Dr. Said Said Elshama**

**Professor of Forensic Medicine and Clinical Toxicology  
Medical Education (DHPE)**

**College of Medicine - Taif & Suez Canal University**



# Definition

## Erectile dysfunction (ED) impotence

Inability to achieve or sustain an erection for satisfactory sexual activity .

(inability to perform sexual act)

## Conditions simulating Erectile dysfunction

- Lack of sexual desire

(Decreased Libido)

- Problems with ejaculation and orgasm

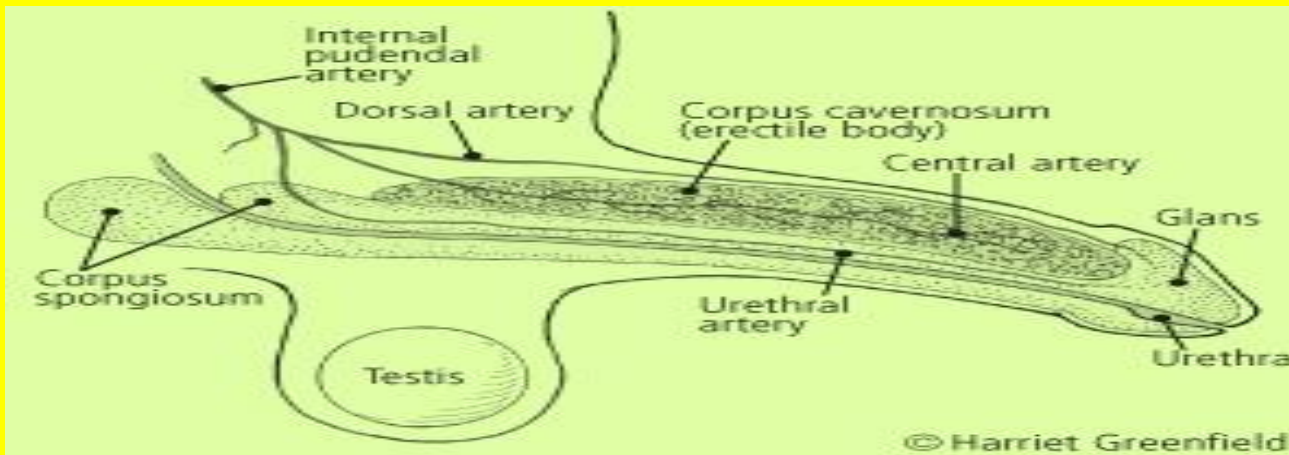
(Ejaculatory Dysfunction)

# Impotence Risk Factors

1. Advanced age . (Increases with [age](#))
  2. Systemic diseases. ([Diabetes](#) , [C.V.S](#) )
  3. High [cholesterol](#).
  4. Cigarette [smoking](#).
  5. [Drug use](#).
  6. [Depression](#) or other psychiatric diseases.
  7. Unhealthy lifestyles  
(Unhealthy Diet + Less Physical Exercise + More Drink)
- ❖ Physical exercise lessen the risk of impotence.

# Diagnosis of Erectile Dysfunction

Repeated inability to achieve or maintain an erection for satisfactory sexual performance for at **least three months**.



## Severity of Erectile Dysfunction (ED)

1. Total inability to achieve an erection.
2. Inconsistent ability to achieve an erection.
3. Sustain only brief erections.

## Requirements of Achievement and Sustained Erections

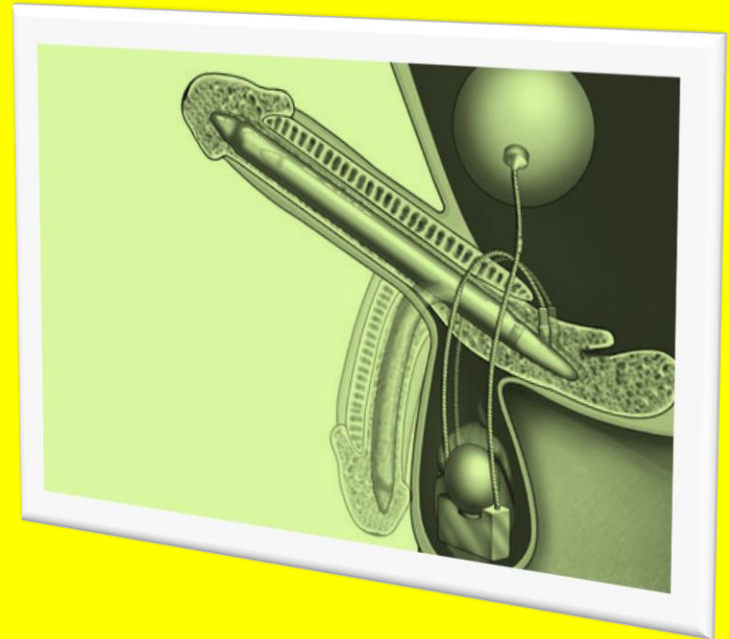
- **Healthy** (nervous -arteries-smooth muscles-fibrous tissues)
- **Sufficient** levels of nitric oxide in the penis.

### Causes of Erectile Dysfunction

- **Age** ( old age – before puberty ” physiological “)
  - **Systemic diseases** (Diabetes mellitus, Hypertension, C.V.S)
  - **Nerve** or spinal cord damage, Cigarette **smoking**
  - **Local disease** ( congenital malformation ) or trauma .
  - **Substance abuse** ([Marijuana](#), heroin, cocaine and alcohol)
  - **Low testosterone levels** ( maintain nitric oxide levels )
  - **Medications** .antihistamines, [antidepressants](#), tranquilizers.
  - **Psychic causes** - depression ,[anxiety](#), [stress](#) and fear of sexual failure (performance anxiety).
- ❖ **Prostate massage under light anesthesia leads to erection**

# Medico-legal Aspect of ED (Impotence)

- 1- Sexual offences (rape)
- 2- Divorce
- 3- Disputed paternity
- 4- Mal-practice



# Examination of ED Case

## History

- **Erectile dysfunction**, loss of libido, disorder of ejaculation, psychological or physical erectile dysfunction.
- **Involuntary erections** in morning and during sleep. Healthy
- **Psychological factors** such as stress and anxiety + maintain involuntary erections.
- **Physical causes** (cigarette smoking, heart attacks, stroke ) + **No** involuntary erections.
- **Diminished sensation of the penis** and the testicles, bladder dysfunction, and decreased sweating in the lower extremities (**diabetic nerve damage**).
- **Loss of sexual desire**, gynecomastia and diminished facial hair suggest **low testosterone levels**.
- **Medications**

# Physical Examination

- Body development - secondary sexual characters
- Small testicles, lack of facial hair, gynecomastia →→ hormonal problems (**low testosterone levels**).
- Diminished arterial pulses of legs or bruits (reduced flow of blood) →→ **atherosclerosis**.
- Congenital anomalies of genitalia
- Touching of the penis →→ no response →→ **nervous problem**.
- Unusual characteristics of the penis.
- **Psychosocial examination**

# laboratory Investigations

- **Lipid profile:**  
High levels of LDL- cholesterol ( atherosclerosis).
- **Blood glucose levels:** diabetes mellitus.
- **Serum creatinine:** kidney damage due to diabetes.
- **Liver function tests:** liver cirrhosis →→ hormonal imbalance and low testosterone levels.
- **Total testosterone levels:** A low total testosterone level.
- **Other hormone levels:**  
(LH, Prolactin , Cortisol , Thyroxin)
- **Ultrasound** of the penis and testicles to check for structural abnormalities.

# How to Diagnose an Erectile Dysfunction Case



**Physiological**

**Non- Physiological**



**Aging**

**Before puberty**

**Physical**

**Psychic**



**Systemic**

**Local**



**Blood supply**

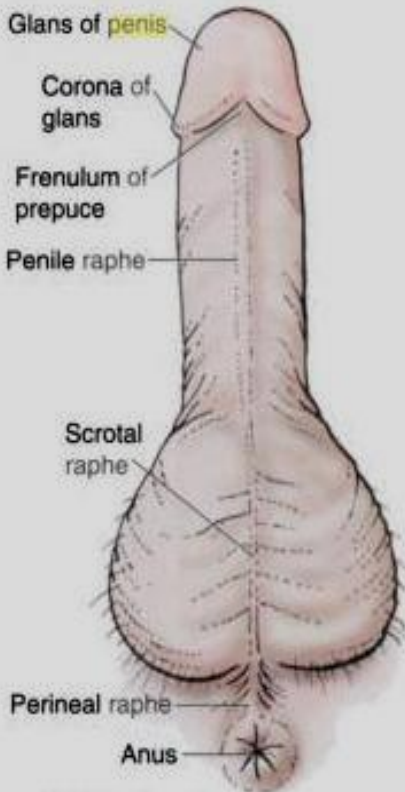
**Nerve supply**

**Endocrine**

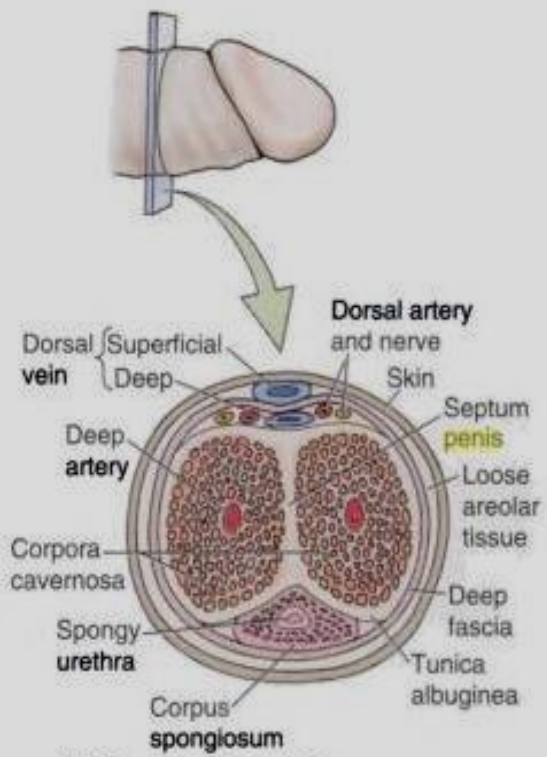
**Drugs and Bad Habits**

**Trauma**

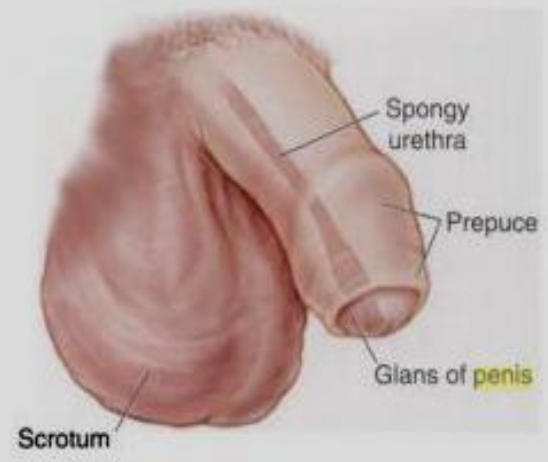
**Congenital**



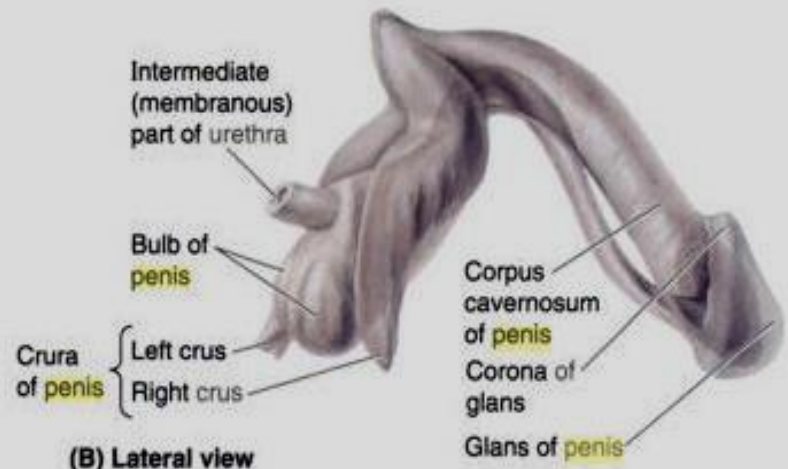
**(A) Inferior view**



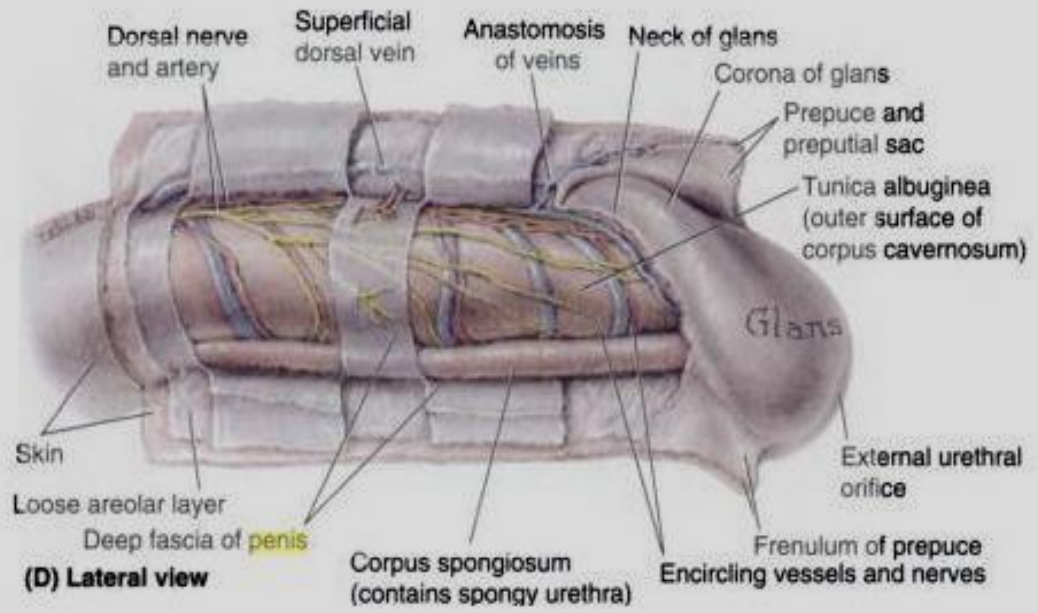
**(C) Cross-sectional view**



**(E) Right anterolateral view**



**(B) Lateral view**



**(D) Lateral view**



**Thank you**