

Head Injuries

Presented

By

Dr/ Said Said Elshama

Professor of Forensic Medicine and Clinical Toxicology

Medical Education (DHPE)

College of Medicine - Taif & Suez Canal University

Types of head injuries :-

- 1- Scalp injuries
- 2- Skull injuries
- 3- Intra – cranial injuries (Brain)

Scalp Injuries :-

1- Contused wound

2- Incised wound

3- Bruises

4- Firearm wound

Skull Injuries :-

1- Fissure Fracture

2- Depressed Fracture

3- Comminuted Fracture

4- Cut Fracture

5- Ring Fracture

Intracranial Injuries (Brain):-

- **1- Concussion**
- **2- Compression :-**
 - A- Extradural Hge.
 - B- Subdural Hge .
 - C- Subarachnoid Hge .
 - D- Intracerebral Hge .
 - E- Depressed Cranial bone

Complications :-

- 1- Retrograde Amnesia
- 2- Post-traumatic Automatism
- 3- Post- traumatic Neurosis
- 4- Epilepsy
- 5- Sepsis
- 6- Permanent Infirmary

Cause of death :-

- 1- Early :-
 - A-Concussion
 - B-Compression
 - C-Cerebral Laceration
- 2- Delayed :-
 - A-Brain abscess
 - B-Sinus thrombosis
 - C-Meningitis



*** Cotused wound in the scalp.**





*** Contused wound in the skin with seperation.**



130 Laceration of the forehead produced by impact with the wind-screen edge of a car in a vehicular accident. The superior edge of the laceration is turned under and the inferior edge is shelved away from the point of initial injury, suggesting that the point of impact was on the lower part of the laceration. The split skin was turned under as the head moved over the object with which it had collided.



215 The back of the head of a man who was killed by a blow with a piece of timber. Blood and matted hair largely conceal the laceration which was present.

216 The same view as 215 after the blood has been cleared away and the hair parted to reveal the laceration.



*** Cut wound of the scalp.**







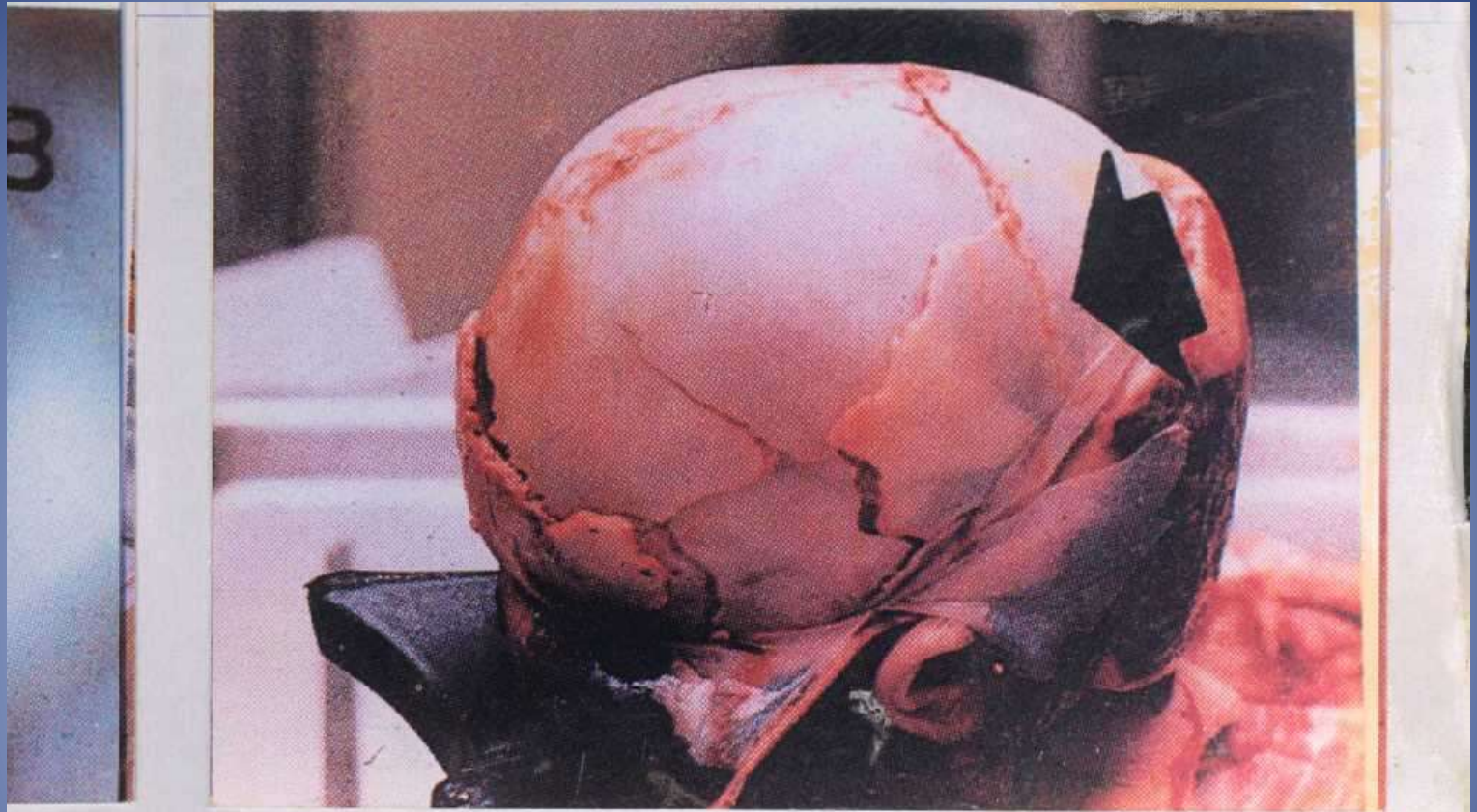
*** Lacerated wound with flaping.**



جرح رضى مائل مقابل العظمة الجدارية اليسرى . الجرح طوله ٥ سم
وحوافه غير منتظمة وله زاويتان حادتان ، وقد يلاحظ عبور الأنسجة
(الجرح الرضى فى فروة الرأس يشابه فى خواصه الجرح القطعى)

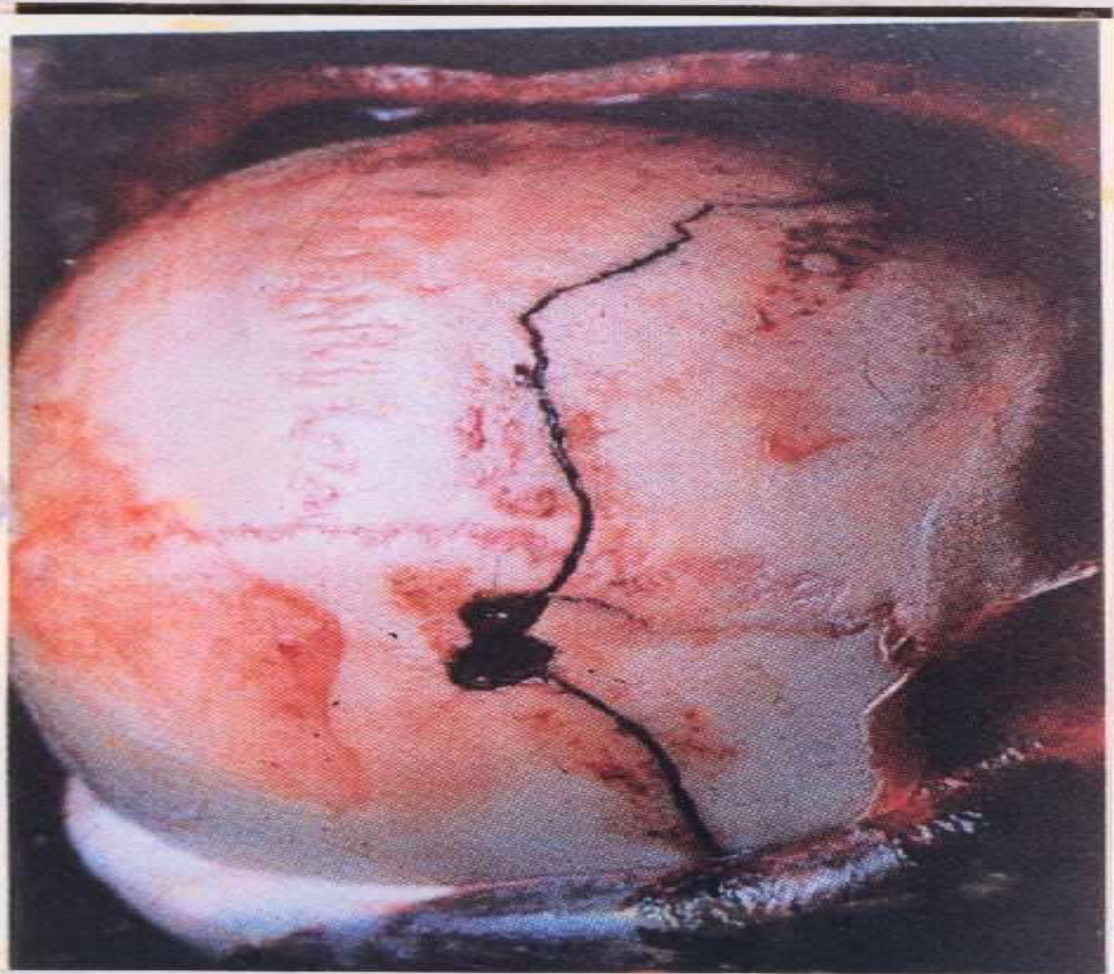


جرح رضى مغزلى الشكل ذو حافتين حادثين باتجاه مائل ،
وبدايته من الجهة الوحشية عند بداية خط الشعر ، وتبعد الناحية
الانسية عن خط الشعر بمسافة ٢ سم . الالة المستخدمة الة راضه
حاده (الجرح الرضى فى هذه المنطقة يشبه الجرح القطعى).



Cominuted fracture with radiating fissure



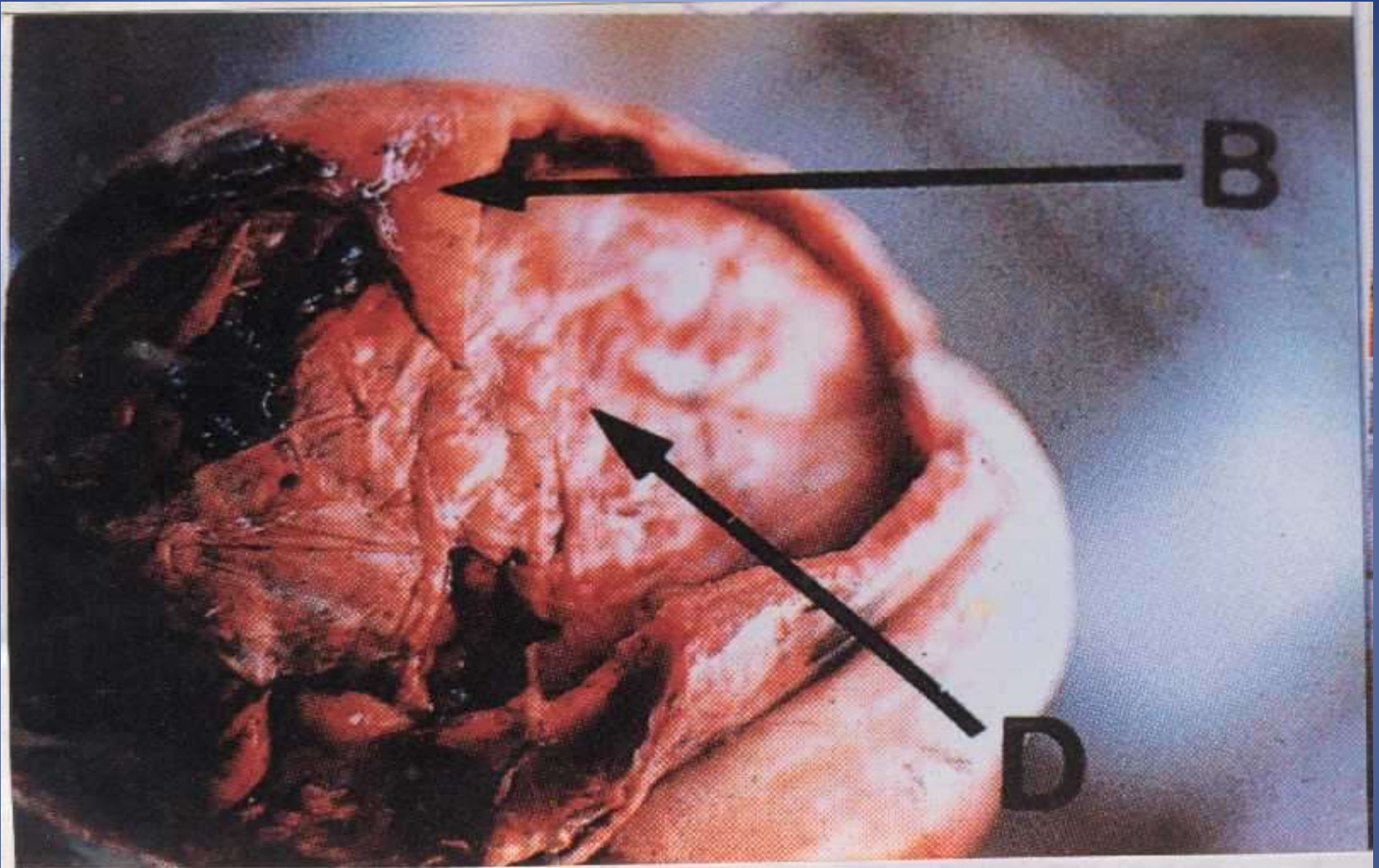


*** Localised dipressed fracture with radiating fissures.**

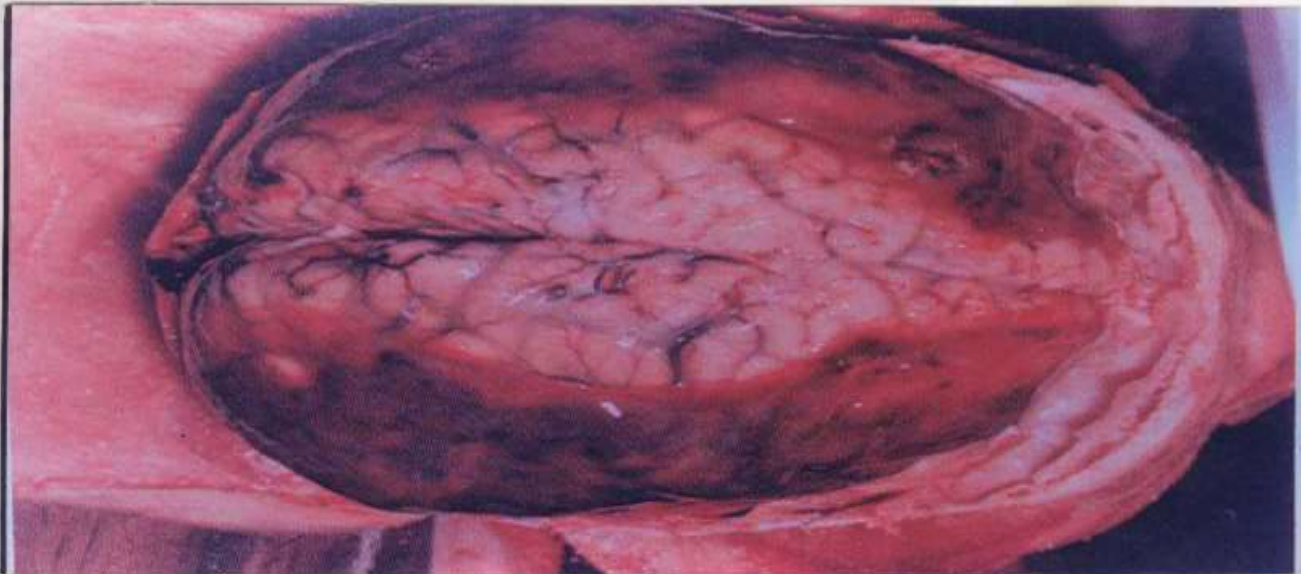


Copyright © 2007 Toolspot.co.uk





*** Extra.dural haemorrhage.**



182 The brain exposed by removal of the calvarium of the skull. On either side can be seen gelatinous purple and pink haematomas which were beneath the dura which has been reflected. These subdural haematomas can occur following trivial injuries to the head, particularly in old people. They provide an unexpected explanation of death, often some weeks later, in old persons who have been known to fall out of bed and to sustain quite a trivial head injury. Death is from pressure on the brain which is in turn caused by progressive increase in the size of these haematomas as they absorb water due to osmotic effect when the constituents of the haematoma break down to form smaller, more osmotically active molecules.



*** Fracture base of the skull.**

Thank you